



Even Better.

Our classic American Tradition Series™ garage doors have gotten even better. We've expanded this series to include new 9200 models, which bring a thicker 2" base door for more robust thermal performance. The bulb seal between every section meets IECC requirements for air infiltration. For those customers that require greater thermal performance, the 9200 models are a perfect solution.

We've always designed the American Tradition Series to keep the beauty and authenticity of the carriage house look. Our overlays provide a realistic depth to the door, and the elegantly handcrafted designs make the door a showpiece for any home or business.

Our handcrafted process uses modern technology and 21st-century materials. Backed by a Lifetime Limited Warranty, American Tradition Series™ doors are the ideal choice to add the style and appeal of a genuine carriage house door that provides a stronger barrier to the elements than wood with the thermal performance you need.

AMERICAN TRADITION™ SERIES

9200 Models

- 2⁵/₈" Thick
- 0.081 Tested U-Factor
- Air Infiltration Seal

9600 Models

- 2" Thick
- 0.096 Tested U-Factor

- Residential & Commercial sizes
- 26 Gauge Galvanized Steel
- Full Thermal Break with Environmentally Compliant Polyurethane Insulation
- Polyurethane Overlay Boards
- 8 Solid Base Color Options
- 5 Wood Grain Color Options
- 13 Overlay Color Options to Mix or Match
- 24 Model Options
- 10 Window Options
- Industry Leading Warranty
- Lifetime Rust & Delamination
- 6 Year Hardware
- 3 Year Spring



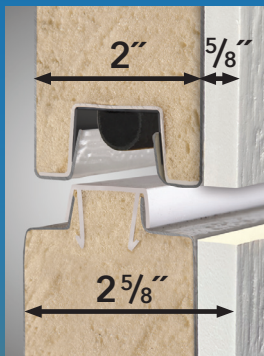
open the door to
endless possibilities



American Tradition™ series

American Tradition™ series has been expanded to include 9200 models with 2" thick base door options.

9200 Models



- 2⁵/₈" Thick with Overlay
- 0.081 Tested U-Factor
- Air Infiltration Joint Seal
- Full Thermal Break
- Environmentally Compliant Polyurethane Insulation
- 26-Gauge Galvanized Steel
- Polyurethane Overlay Boards
- Available with Wind Load & Impact Options
- Lites available in top two sections
- Max Width = 20'2"
- Max Height = 16'0"

9600 Models



- 2" Thick with Overlay
- 0.096 tested U-Factor
- Full Thermal Break
- Environmentally Compliant Polyurethane Insulation
- 26-Gauge Galvanized Steel
- Polyurethane Overlay Boards
- Available with Wind Load & Impact Options
- Lites available in top two sections
- Max Width = 18'2"
- Max Height = 16'0"

Single Door Designs

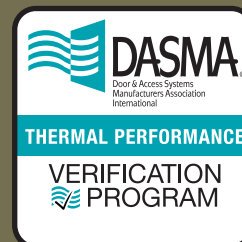


9220 Plain 9221 Plain 9222 Plain 9240 Plain 9241 Plain 9242 Plain 9230 Arch 9231 Arch 9232 Arch 9250 Arch 9251 Arch 9252 Arch

Colors



For an accurate color match, contact your Haas Door dealer.
 **Carbon Black includes a cool chemistry paint finish but is not recommended for projects with extreme exposures to heat and sunlight.



U-Factor uses a solid door assembly. Adding lites will affect the tested U-Factor.